



Health impact assessment of particulate matter in Sanandaj, Kurdistan, Iran

Gilas Hosseini¹, Afshin Maleki¹, Hassan Amini¹, Shahab Mohammadi²,
Mohammad Sadegh Hassanvand³, Omid Giahi¹, Fardin Gharibi⁴

1 Kurdistan Environmental Health Research Center, Kurdistan University of Medical Sciences, Sanandaj, Iran

2 Department of Natural Resources and Environment, Islamic Azad University, Science and Research Branch, Hamedan, Iran

3 Center for Air Pollution Research (CAPR), Institute for Environmental Research (IER), Tehran University of Medical Sciences, Tehran, Iran

4 Deputy of Research, Kurdistan University of Medical Sciences, Sanandaj, Iran

Original Article

Abstract

Air pollution is a major environmental issue in all regions of the world. We aimed to assess the health impacts of particulate matter with an aerodynamic diameter $< 10 \mu\text{m}$ (PM_{10}) in Sanandaj, Kurdistan, Iran. The air pollution data were obtained from Sanandaj Department of Environment Protection. The annual mortality and morbidity, including cardiovascular and respiratory diseases attributable to PM_{10} exposure were estimated using AirQ model, which is the proposed method for health impact assessment of air pollution by World Health Organization. The annual, winter, and summer averages of PM_{10} in 2013 were 81.5, 64.7, and 98.3 $\mu\text{g}/\text{m}^3$, respectively. The total mortality, cardiovascular mortality, respiratory mortality, hospital admissions due to cardiovascular diseases, and hospital admissions due to respiratory diseases, respectively, were estimated 228, 120, 23, 118, and 305 cases. Approximately 11.7% of total mortality was associated with concentrations more than 20 $\mu\text{g}/\text{m}^3$. This study was the first attempt to assess the health impacts of air pollution in Sanandaj, Kurdistan, Iran. In summary, we found increased mortality and morbidity attributable to PM_{10} exposure.

KEYWORDS: Air Pollution, AirQ Model, Health Impact Assessment, Morbidity, Mortality, PM_{10}

Date of submission: 29 Sep 2013, **Date of acceptance:** 29 Nov 2013

Citation: Hosseini G, Maleki A, Amini H, Mohammadi Sh, Hassanvand MS, Giahi O, Gharibi F. **Health impact assessment of particulate matter in Sanandaj, Kurdistan, Iran.** J Adv Environ Health Res 2014; 2(1): 54-62.

Introduction

Air pollution is a major environmental issue in all regions of the world.^{1,2} Foundational epidemiologic studies have found a variety of chronic and acute health effects attributable to ambient air pollution.^{3,4} These include hospitalizations, respiratory, and cardiovascular diseases.⁵⁻¹² The World Health Organization

(WHO) estimated that the annual global burden of these health outcomes is roughly 865,000 premature deaths.³ Furthermore, almost 150,000 lost lives in 2003 were attributed to ambient air pollution exposure in South Asia.⁹

One of the air pollutants that can penetrate deep into the human lung is particulate matter with aerodynamic diameters $< 10 \mu\text{m}$ (PM_{10}). The health impacts of PM_{10} , such as asthma, bronchitis, impaired lung function and cardiopulmonary diseases are well-recognized.¹³⁻¹⁶

Corresponding Author:

Afshin Maleki

Email: maleki43@yahoo.com

In addition, many studies reported that short- and long-term exposure to PM₁₀ can lead to elevated mortality and morbidity risks.^{6,17-21}

Sanandaj is the capital city of Kurdistan province in North West of Iran. In recent years, the annual mean PM₁₀ concentrations increased dramatically and there are many public concerns regarding this issue. Therefore, in this study, the authors aimed to assess the health impacts attributable to PM₁₀ exposure in Sanandaj, Iran.

Materials and Methods

Sanandaj is the capital city of Kurdistan Province in North West of Iran. Based on the latest census report, the population is about 450,000 persons.²² Meanwhile, it is located in the longitude and latitude of 47°00' E and 35°32' N and the altitude is about 1450-1538 m above sea level. The city is developing and non-industrialized (Figure 1).

The complete mean daily PM₁₀ data from January 01, 2013 to January 01, 2014 were obtained from Sanandaj Department of Environment Protection. The data were for

Azadi square monitoring station, which is a traffic station (Figure 1).

AirQ 2.2.3 software and its used approach has been proposed by WHO to estimate the impacts of short-term exposure to air pollutants on the health of the population. It has been developed to estimate the health impacts of exposure to specific air pollutants on a resident population in a certain area and period. In this software, health impact assessment of air pollutants is standing on the calculation of attributable proportion (AP) in which AP is the fraction of health consequences in a specific population that can be attributed to a specific air pollutant exposure with this notion that there is proven causative correlation between health consequences and air pollutant exposure. The AP can be easily calculated with the following formula:^{21,23,24}

$$AP = \frac{\sum \{ [RR(c) - 1] \times P(c) \}}{\sum [RR(c) \times P(c)]} \quad (1)$$

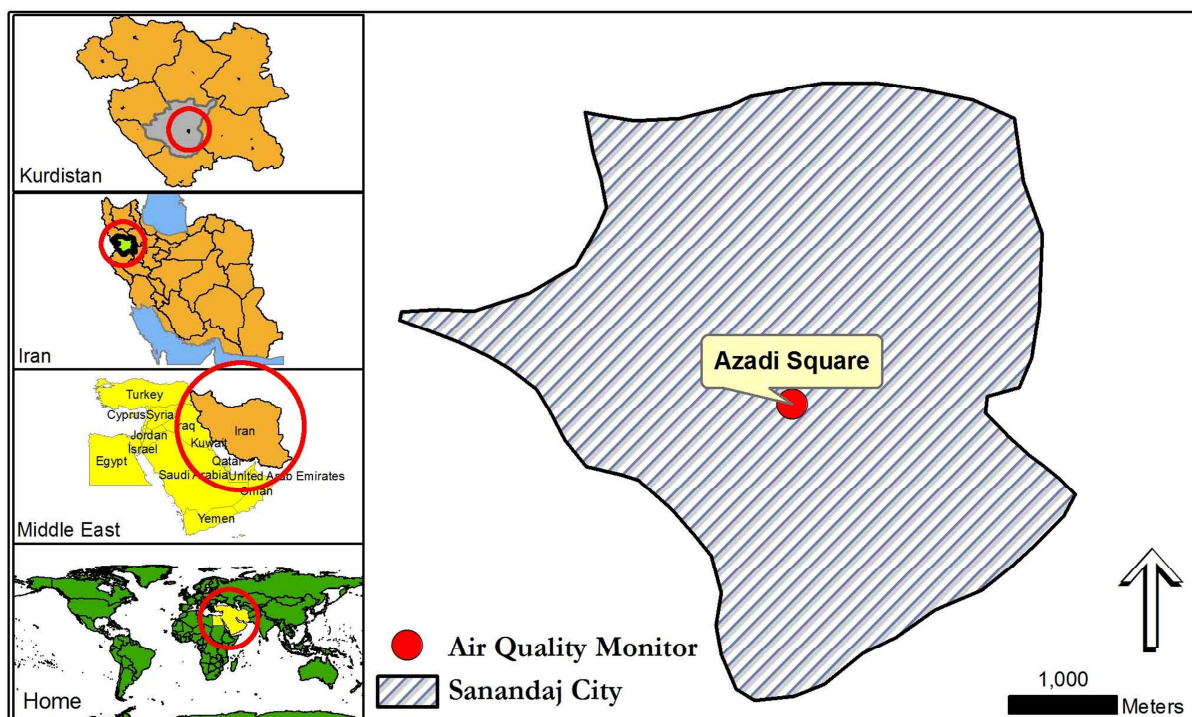


Figure 1. This study area of Sanandaj, Iran, and location of the air quality monitoring station in 2013

where RR denotes the relative risk for a given health endpoint, in category “c” of exposure, obtained from the concentration–response functions derived from wide literature (i.e., current existent epidemiological studies) and $P(c)$ denotes the proportion of the population in category “c” of exposure.

The rate attributable to the exposure can be calculated as the following equation if the baseline frequency of the health endpoint is known in the population:

$$IE = I \times AP \quad (2)$$

where IE denotes the rate of the health outcome attributable to the exposure, and I denotes the baseline frequency of the health endpoint in the population.

Finally, the number of cases attributable to the exposure can be estimated as the following equation knowing the size of the population:

$$NE = IE \times N \quad (3)$$

where NE denotes the number of cases attributed to the exposure and N denotes the size of the population investigated.^{21,23,24}

In this research, mean daily PM₁₀ data and exposed population were entered to the software for the period of January 2013 to January 2014. Afterwards, number of cases for total mortality, cardiovascular mortality, respiratory mortality, hospital admissions due to cardiovascular diseases, and hospital admissions due to respiratory diseases were calculated using relative risk and baseline incidence of WHO.²⁵

Results and Discussion

This paper is a case study, which assesses the effects of PM₁₀ on human health for people living in Sanandaj using a method developed by WHO. Figure 2 shows a summary of PM₁₀ concentrations measured in Azadi Square Station in 2013. The annual average PM₁₀ was 81.5 $\mu\text{g}/\text{m}^3$, which is two-fold of the European Union standard and much higher than WHO air quality guideline (20 $\mu\text{g}/\text{m}^3$). The highest PM₁₀ concentration with a maximum value of 666.9 $\mu\text{g}/\text{m}^3$ was measured during summer.

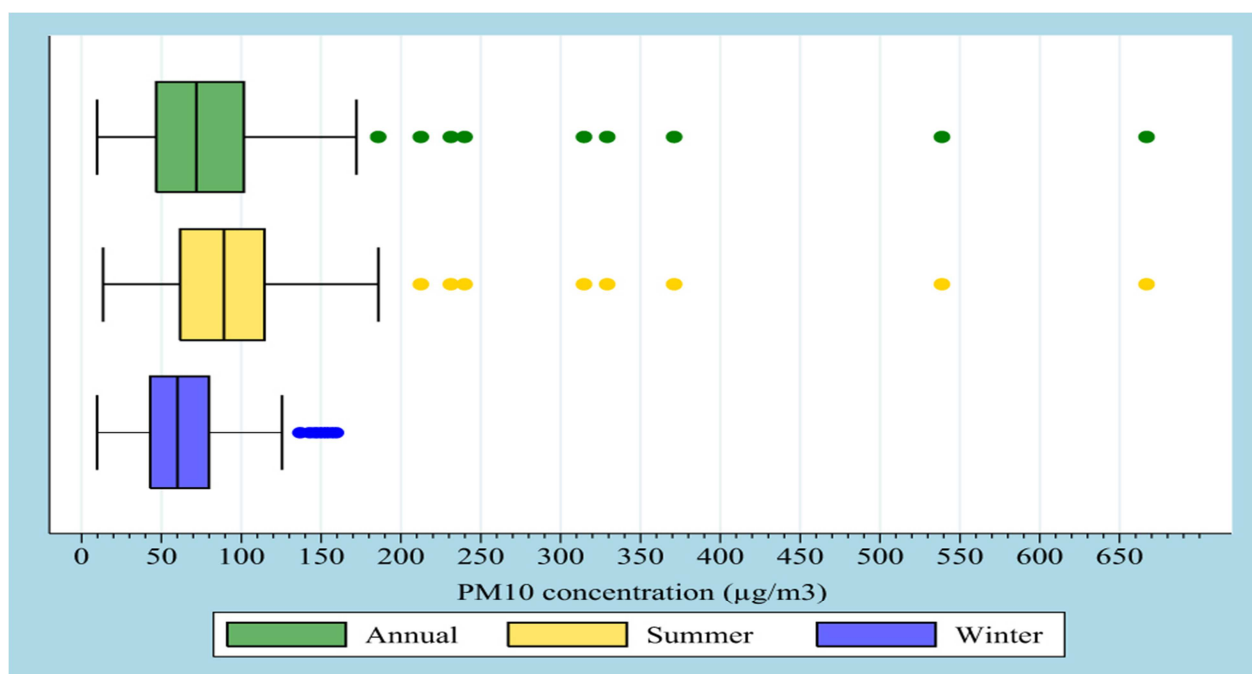


Figure 2. Descriptive statistics of measured particulate matter with aerodynamic diameters <10 μm concentrations in Sanandaj, Iran, in 2013

Figure 3 shows the percentage of time that people were exposed to PM₁₀ concentrations. These data are used to estimate the short-term health effects. The highest percentage of person-days was associated with 40-49 µg/m³ of PM₁₀, which shows that maximum exposure days to PM₁₀ were at these concentration ranges. In addition, this diagram demonstrates that with the increase in PM₁₀ concentration the number of exposure days reduces.

The excess cases and estimated AP to PM₁₀ for total mortality, cardiovascular mortality, respiratory mortality, hospital admissions due

to cardiovascular diseases, and hospital admissions due to respiratory diseases are shown in table 1.

Figure 4 shows percentage of the cases related to aforementioned effects at different PM₁₀ concentrations. Although a higher percentage of person-days was associated with 40-49 µg/m³ of PM₁₀ (Figure 3), percentage of the cases related to health end points is relatively low; however, its maximum was occurred at 70-79 µg/m³ (Figure 4).

Fifty-one percent of short-term effects were happened at the time of concentrations not

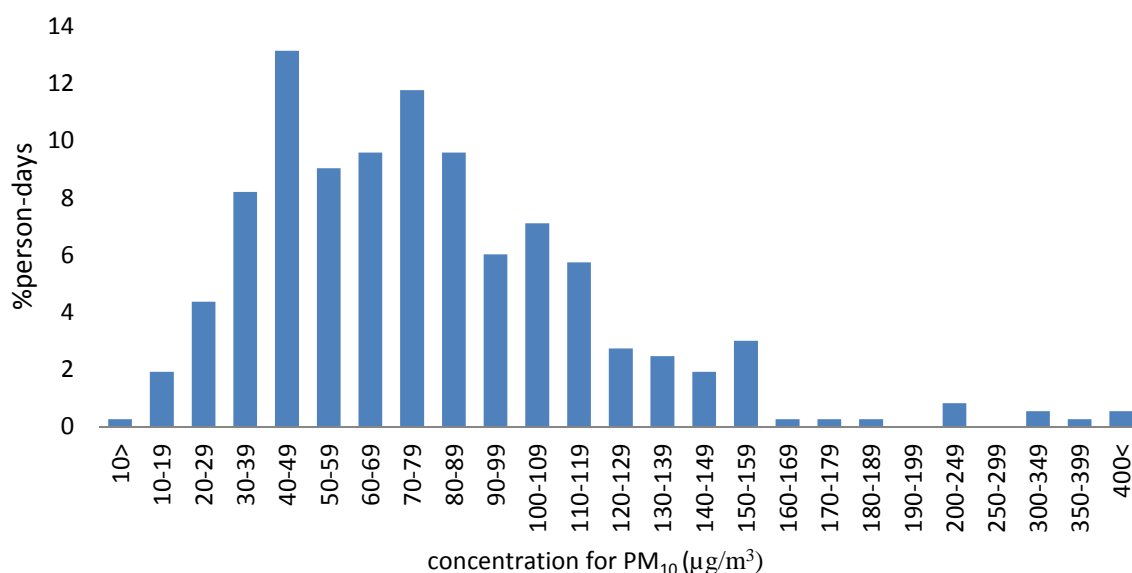


Figure 3. Percentage of days on which people in Sanandaj are exposed to different concentrations of particulate matter with aerodynamic diameters <10 µm

Table 1. Baseline incidence, relative risk, estimated attributable proportion, and number of annual excess cases due to short-term exposure to particulate matter with aerodynamic diameters <10 µm above 10 µg/m³

Health endpoints	BI*	RR	Attributable proportion in percent (uncertainty range)**	Number of excess cases (uncertainty range)**
Total mortality	1013	1.0074 (1.0062-1.0086)	5.0 (4.2-5.8)	228 (193-263)
Cardiovascular mortality	497	1.0080 (1.0050-1.0180)	5.4 (3.4-11.4)	120 (77-254)
Respiratory mortality	66	1.0120 (1.0080-1.0370)	7.9 (5.4-20.9)	23 (16-62)
Hospital admissions due to cardiovascular disease	436	1.0090 (1.0060-1.0130)	6.0 (4.1-8.5)	118 (80-166)
Hospital admissions due to respiratory disease	1260	1.0080 (1.0048-1.0112)	5.4 (3.3-7.4)	305 (187-419)

*Crude rate per 100,000 inhabitants; ** Obtained using the lower and upper RR values; BI: Baseline incidence; RR: Relative risk

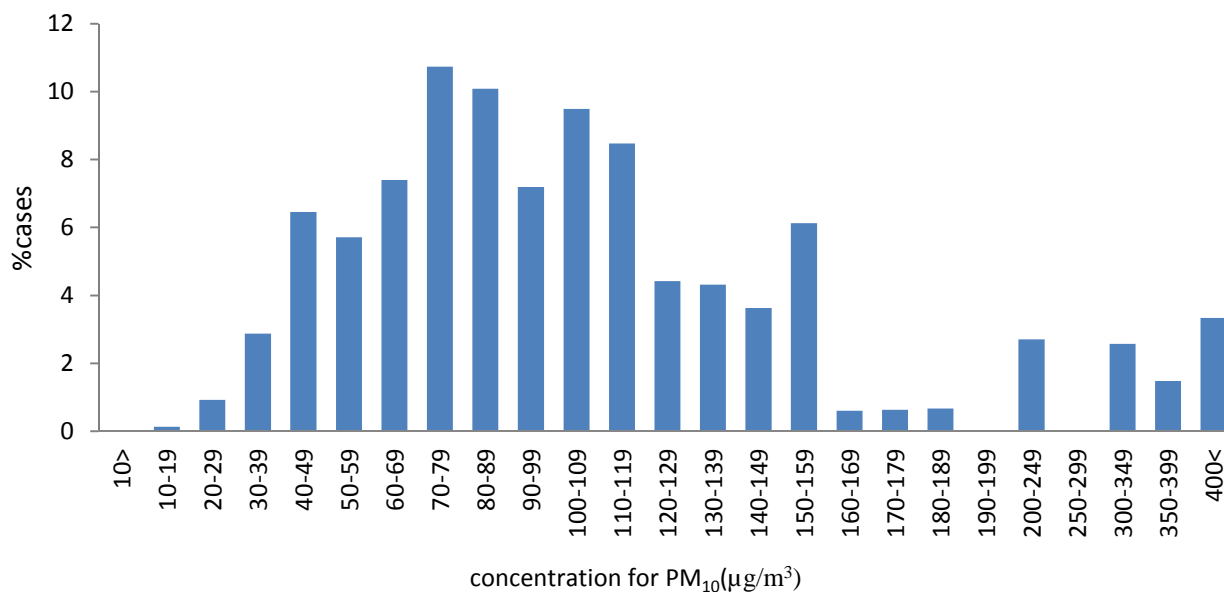


Figure 4. Percentage of a number of cases that are exposed to different concentrations of particulate matter with aerodynamic diameters <10 μm

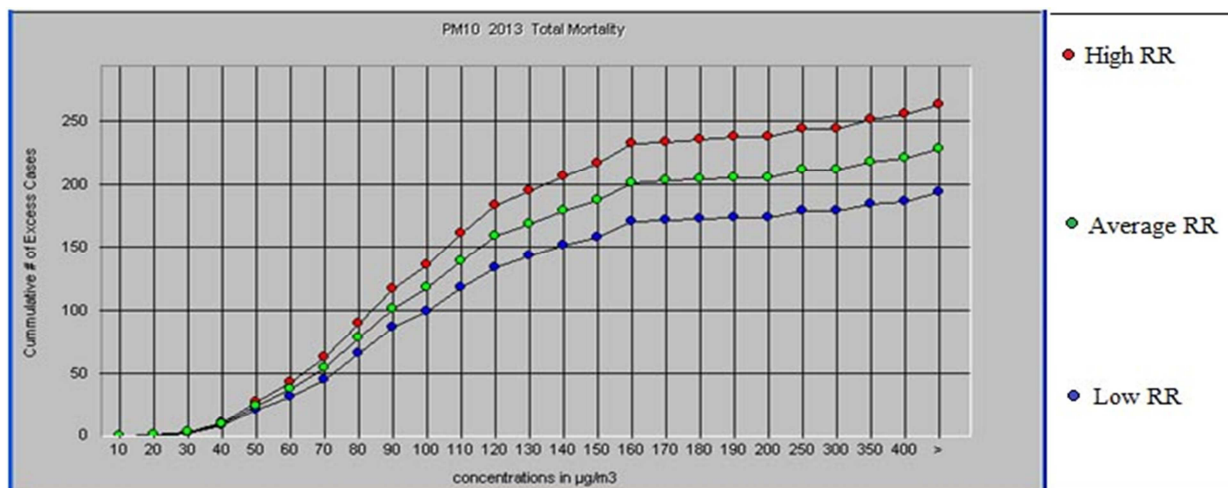


Figure 5. Estimated cumulative number of total mortality cases attributable to particulate matter with aerodynamic diameters <10 μm comparing concentration intervals by means of the model (Sanandaj, Iran, 2013)

RR: Relative risk

exceeding 99 μg/m³. In Sanandaj, with a population of 450,000, the total non-accidental mortalities were 1936 cases in 2013. Figure 5 also shows that the cumulative number of total mortalities were 228; therefore, based on this model 11.7% of them were related to concentrations over 20 μg/m³ of PM₁₀.

Another study conducted by Goudarzi et al. in 2008, showed that 4% of the total mortalities

in Tehran were related to concentrations above 20 μg/m³.²⁶ In 2005, Tominz et al. utilized AirQ model, in order to measure health effects of PM₁₀ in Trieste, Spain. They concluded that 1.8% of cardiovascular and 2.5% of respiratory mortalities were related to concentrations above 20 μg/m³.²⁷ A comparison between the results of the present study and other studies conducted in Tehran and Trieste shows that higher rate of

mortality in Sanandaj can be related to higher mean concentration of PM₁₀ or extent of days with high PM₁₀ concentration in Sanandaj. In another studies on 29 European cities, 20 American cities, and some Asian countries, it was revealed that adverse health effects of short-term exposure to PM₁₀ in cities of different developing and developed countries are identical and mortality rate increases by 0.5% after PM₁₀ daily increase of 10 µg/m³.²⁸⁻³¹

Cumulative cases of different health end points attributed to PM₁₀ concentrations are

illustrated in figures 6-9. Figures showed three ranges of relative risk based on model's default, which were considered for assessing health effects of PM₁₀. The total number of cases for total mortality, cardiovascular mortality, respiratory mortality, hospital admissions due to cardiovascular diseases, and hospital admissions due to respiratory diseases in relative average risk were 120, 23, 118, and 305 persons, respectively. Seventy-three percent of them were related to the PM₁₀ concentrations lower than 129 µg/m³.

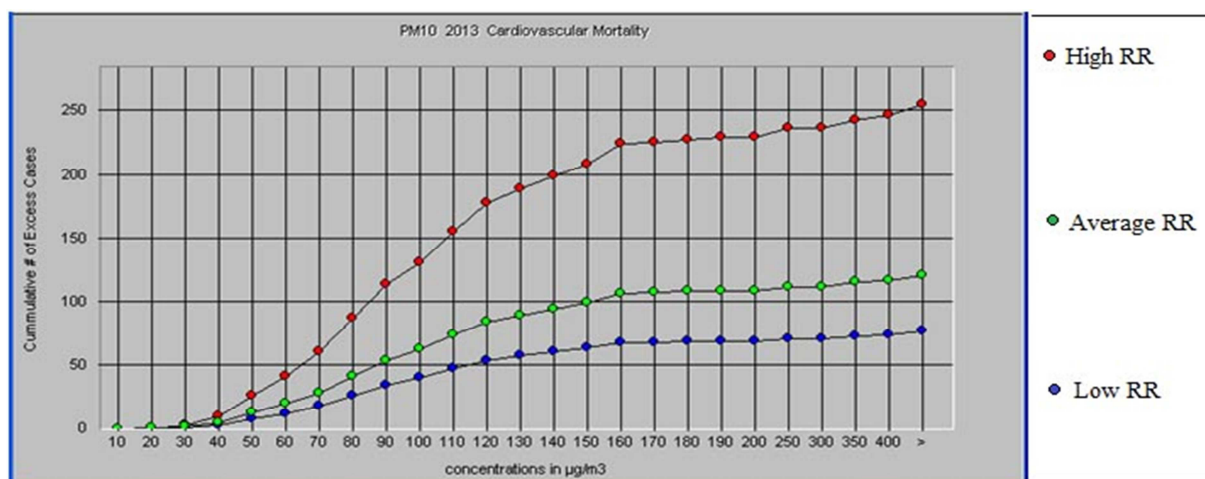


Figure 6. Estimated cumulative number of cardiovascular mortality cases attributable to particulate matter with aerodynamic diameters <10 µm comparing concentration intervals (Sanandaj, Iran, 2013)
RR: Relative risk

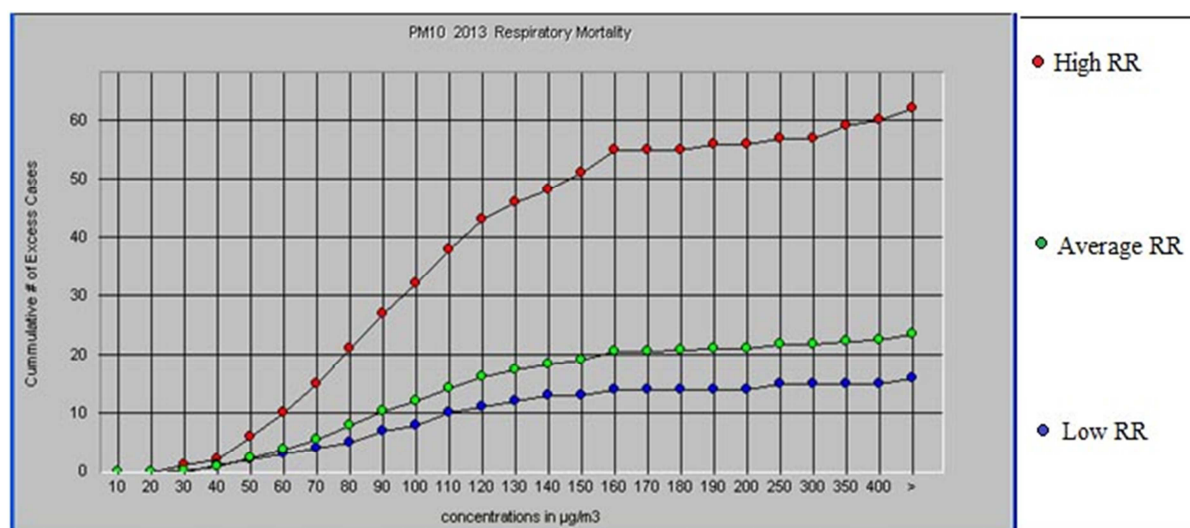


Figure 7. Estimated cumulative number of respiratory mortality cases attributable to particulate matter with aerodynamic diameters <10 µm comparing concentration intervals (Sanandaj, Iran, 2013)
RR: Relative risk

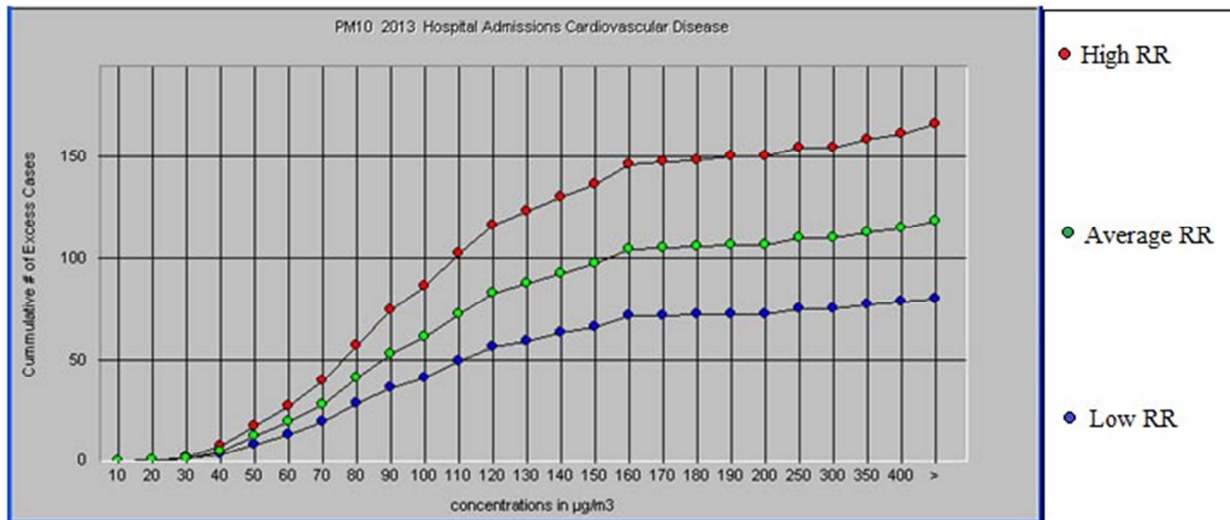


Figure 8. Estimated cumulative number of hospital admission cardiovascular diseases cases attributable to particulate matter with aerodynamic diameters <10 µm comparing concentration intervals (Sanandaj, Iran, 2013)

RR: Relative risk

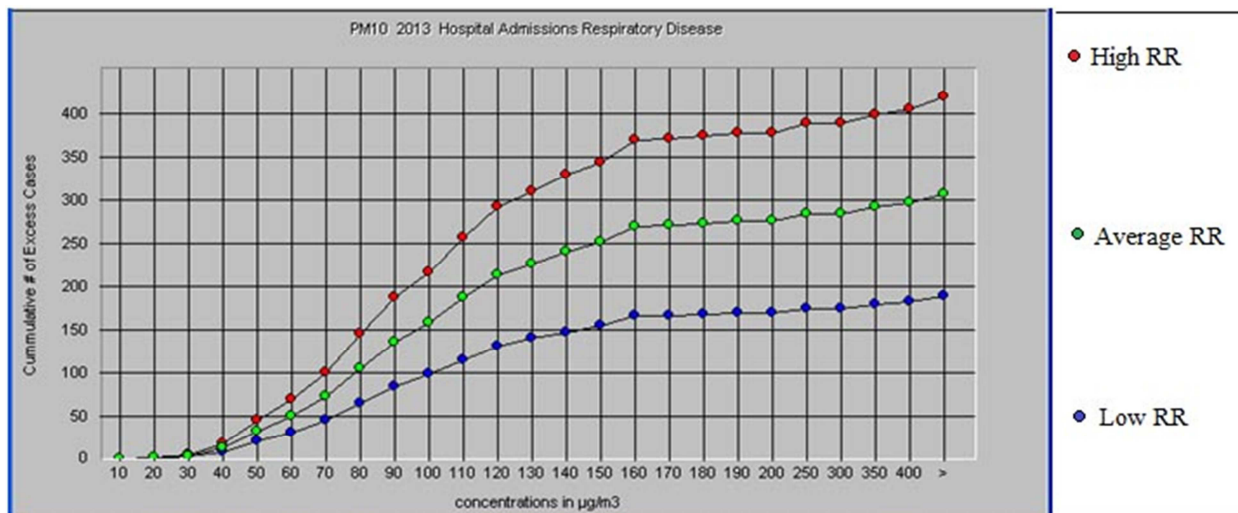


Figure 9. Estimated cumulative number of hospital admission respiratory diseases cases attributable to particulate matter with aerodynamic diameters <10 µm comparing concentration intervals (Sanandaj, Iran, 2013)

RR: Relative risk

Conclusion

The objective of this study was to measure the adverse health effects of PM₁₀ on the Sanandaj people using AirQ software, which shows the effects of pollutants on residents of a certain area. The results of the present study are in line with other studies and reveal that 11.7% of mortality rates in Sanandaj are related to

concentrations of PM₁₀ above 20 µg/m³. A comparison between the results of the present study and other studies conducted in Tehran and Trieste shows that higher mortality rate in Sanandaj is due to higher average PM₁₀ or higher number of exposure days. Consequently, the health impact estimated for the city of Sanandaj underscores the need for urgent action to reduce the health burden of PM₁₀.

Conflict of Interests

Authors have no conflict of interests.

Acknowledgements

This research was part of the MSPH thesis completed by Gilas Hosseini and has been supported by Kurdistan University of Medical Sciences. The authors extend their special thanks to Dr. Gholamreza Goudarzi from Ahavaz Jundishapur University of Medical Sciences. We would like to also thank Sanandaj Department of Environment Protection for providing us the air pollution data.

References

- Kunzli N, Kaiser R, Medina S, Studnicka M, Chanel O, Filliger P, et al. Public-health impact of outdoor and traffic-related air pollution: a European assessment. *Lancet* 2000; 356(9232): 795-801.
- Amini H, Taghavi-Shahri SM, Henderson SB, Naddafi K, Nabizadeh R, Yunesian M. Land use regression models to estimate the annual and seasonal spatial variability of sulfur dioxide and particulate matter in Tehran, Iran. *Sci Total Environ* 2014; 488-489C: 343-53.
- Cohen AJ, Ross AH, Ostro B, Pandey KD, Krzyzanowski M, Kunzli N, et al. The global burden of disease due to outdoor air pollution. *J Toxicol Environ Health A* 2005; 68(13-14): 1301-7.
- Gauderman WJ, Avol E, Gilliland F, Vora H, Thomas D, Berhane K, et al. The effect of air pollution on lung development from 10 to 18 years of age. *N Engl J Med* 2004; 351(11): 1057-67.
- Breitner S, Liu L, Cyrus J, Bruske I, Franck U, Schlink U, et al. Sub-micrometer particulate air pollution and cardiovascular mortality in Beijing, China. *Sci Total Environ* 2011; 409(24): 5196-204.
- Janssen NA, Fischer P, Marra M, Ameling C, Cassee FR. Short-term effects of PM_{2.5}, PM₁₀ and PM_{2.5-10} on daily mortality in The Netherlands. *Sci Total Environ* 2013; 463-464: 20-6.
- Jimenez E, Linares C, Rodriguez LF, Bleda MJ, Diaz J. Short-term impact of particulate matter (PM_{2.5}) on daily mortality among the over-75 age group in Madrid (Spain). *Sci Total Environ* 2009; 407(21): 5486-92.
- Zhang LW, Chen X, Xue XD, Sun M, Han B, Li CP, et al. Long-term exposure to high particulate matter pollution and cardiovascular mortality: a 12-year cohort study in four cities in northern China. *Environ Int* 2014; 62: 41-7.
- Goudarzi G, Zallaghi E, Neissi A, Ankali KA, Saki A, Babaei AA, et al. Cardiopulmonary mortalities and chronic obstructive pulmonary disease attributed to ozone air pollution. *Arch Hyg Sci* 2013; 2(2): 62-72.
- Downs SH, Schindler C, Liu LJ, Keidel D, Bayer-Oglesby L, Brutsche MH, et al. Reduced exposure to PM₁₀ and attenuated age-related decline in lung function. *N Engl J Med* 2007; 357(23): 2338-47.
- Kunzli N, Jerrett M, Mack WJ, Beckerman B, LaBree L, Gilliland F, et al. Ambient air pollution and atherosclerosis in Los Angeles. *Environ Health Perspect* 2005; 113(2): 201-6.
- Amini H, Shamsipour M, Sowlat MH, Parsaeian M, Kasaeian A, Hassanvand MS, et al. National and sub-national Environmental Burden of Disease in Iran from 1990 to 2013-study profile. *Arch Iran Med* 2014; 17(1): 62-70.
- Dockery DW, Pope CA, III. Acute respiratory effects of particulate air pollution. *Annu Rev Public Health* 1994; 15: 107-32.
- Schwartz J, Slater D, Larson TV, Pierson WE, Koenig JQ. Particulate air pollution and hospital emergency room visits for asthma in Seattle. *Am Rev Respir Dis* 1993; 147(4): 826-31.
- Xie RK, Seip HM, Leinum JR, Winje T, Xiao JS. Chemical characterization of individual particles (PM₁₀) from ambient air in Guiyang City, China. *Sci Total Environ* 2005; 343(1-3): 261-72.
- Reisen VA, Sarnaglia AJQ, Reis J, Levy-Leduc C+, Santos JM. Modeling and forecasting daily average PM₁₀ concentrations by a seasonal long-memory model with volatility. *Environmental Modelling & Software* 2014; 51(0): 286-95.
- Lopez JM, Callen MS, Murillo R, Garcia T, Navarro MV, de la Cruz MT, et al. Levels of selected metals in ambient air PM₁₀ in an urban site of Zaragoza (Spain). *Environ Res* 2005; 99(1): 58-67.
- Maheswaran R, Haining RP, Brindley P, Law J, Pearson T, Fryers PR, et al. Outdoor air pollution, mortality, and hospital admissions from coronary heart disease in Sheffield, UK: a small-area level ecological study. *Eur Heart J* 2005; 26(23): 2543-9.
- Pisoni E, Volta M. Modeling Pareto efficient PM₁₀ control policies in Northern Italy to reduce health effects. *Atmospheric Environment* 2009; 43(20): 3243-8.
- Wang S, Feng X, Zeng X, Ma Y, Shang K. A study on variations of concentrations of particulate matter with different sizes in Lanzhou, China. *Atmospheric Environment* 2009; 43(17): 2823-8.
- Gharehchahi E, Mahvi AH, Amini H, Nabizadeh R, Akhlaghi AA, Shamsipour M, et al. Health impact assessment of air pollution in Shiraz, Iran: a two-part study. *J Environ Health Sci Eng* 2013; 11(1): 11.
- Statistical Centre of Iran. Estimated population of country cities for 2011 [Online]. [cited 2011]; Available from: URL: <http://www.amar.org.ir/Default.aspx?tabid=1228>

23. Krzyzanowski M. Methods for assessing the extent of exposure and effects of air pollution. *Occup Environ Med* 1997; 54(3): 145-51.
24. Naddafi K, Hassanvand MS, Yunesian M, Momeniha F, Nabizadeh R, Faridi S, et al. Health impact assessment of air pollution in megacity of Tehran, Iran. *Iranian J Environ Health Sci Eng* 2012; 9(1): 28.
25. Hassanvand MS, Amini H, Yunesian M. The evaluation of PM₁₀, PM_{2.5}, and PM₁ concentrations during the Middle Eastern Dust (MED) events in Ahvaz, Iran. *Journal of Arid Environments* 2013; 97: 1-2.
26. Goudarzi GH, Naddafi K, Mesdaghinia AR. Quantifying the health effects of air pollution in Tehran and the third axis of the comprehensive plan to reduce air pollution in Tehran [Thesis]. Tehran, Iran: Tehran University of Medical Sciences; 2009.
27. Tominz R, Mazzoleni B, Daris F. Estimate of potential health benefits of the reduction of air pollution with PM₁₀ in Trieste, Italy. *Epidemiol Prev* 2005; 29(3-4): 149-55.
28. Katsouyanni K, Touloumi G, Samoli E, Gryparis A, Le TA, Monopolis Y, et al. Confounding and effect modification in the short-term effects of ambient particles on total mortality: results from 29 European cities within the APHEA2 project. *Epidemiology* 2001; 12(5): 521-31.
29. Samet JM, Zeger SL, Dominici F, Curriero F, Coursac I, Dockery DW, et al. The National Morbidity, Mortality, and Air Pollution Study. Part II: Morbidity and mortality from air pollution in the United States. *Res Rep Health Eff Inst* 2000; 94(Pt 2): 5-70.
30. Ezzati M. Comparative Quantification of Health Risks: Sexual and reproductive health. Geneva, Switzerland: World Health Organization; 2004. p. 1177-320.
31. Health Effects Institute. Health Effects of Outdoor Air Pollution in Developing Countries of Asia: A Literature Review [Online]. [cited 2004 Jan 1]; Available from: URL: <http://pubs.healtheffects.org/view.php?id=3>.